



Client _____ Quantity _____
Project _____ Position _____

FUN 700

Model: F70/70PEI/50

Cod: MP01532123000

Technical data

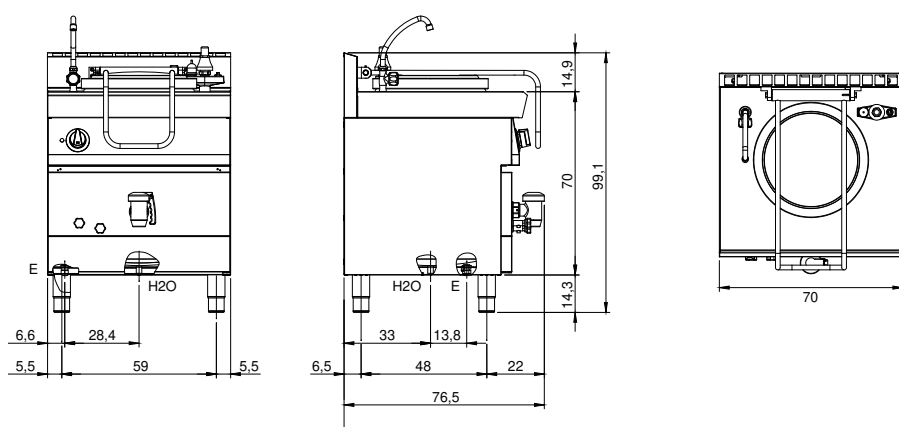
Modularity:	On closed cabinet
Dimension (mm):	700x700x850
Total electric power (kW):	12
Nr. Wells:	1
Well litres 1:	50
Well dimensions 1 (mm):	Ø400x475
Electric power (V):	380-415
Ampere (A):	18,5
Phases:	3N
Cable section (mmq):	5G2,5
Frequency (Hz):	50-60
Drain size:	1 1/2"
Net volume (m3):	0,417
Packing dimensions (mm):	880x856x1274
Gross weight (kg):	79
Gross volume (m3):	0,960

Features

Working top:	Made of AISI 304 stainless steel with a thickness of 10/10 mm
Type of heating:	Indirect
Knobs:	Knobs are made from a sturdy heat-resistant polymer blend and are equipped with liquid anti-leakage washer
Water inflow:	With tap positioned on the top

Electric pan indirect heating capacity 50 lt. Top and tub made of AISI 304 stainless steel; covering in AISI 304 stainless steel thickness 8/10; external reinforcements made of anti-corrosion material (aluminised sheet metal); bottoms and internal parts in AISI 430 steel. Model with indirect heating of the tub by means of water-filled chamber. Equipped with a water filling tap for the tub located on the top and a large 1"1/2 drain valve located on the front panel. Equipped with cock to check water level in the water-filled space and a series of safety devices including the valve assembly for the control of pressure in the water-filled space. Pan equipped with shielded heating elements located in the water-filled space and with a four-position commutator for temperature adjustment. Safety thermostat and indicator lights to show correct operation. - 2 heating elements x 6 kW. Total power 12 kW. Nominal capacity 50 lt. Internal tub diameter 395 mm. Electrical power supply VAC 400 + 3N 50÷60 Hz.

Technical draw



E: Electric power

H2O: Water inflow 3/4"