

Client _____ Quantity _____
 Project _____ Position _____

FUN 600

Model: F60/60FTE/CL/T

Cod: MP01372121009



Technical data

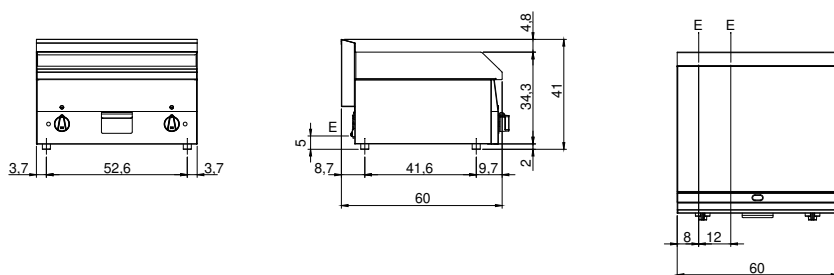
Modularity:	Top
Dimension (mm):	600x600x300
Total electric power (kW):	6
Cooking zone dimensions 1 (LxD mm):	596x470
Electric power (V):	380-415
Ampere (A):	9,5
Phases:	3N
Cable section (mmq):	5G1,5
Frequency (Hz):	50-60
Net volume (m3):	0,108
Packing dimensions (mm):	676x695x630
Gross weight (kg):	47
Gross volume (m3):	0,296

Features

Working top:	Made of AISI 304 stainless steel with a thickness of 8/10 mm
Material of plate:	Polished chrome
Plate finish:	Smooth
Knobs:	Knobs are made from a sturdy heat-resistant polymer blend
Flue:	Made in a single piece, which facilitates the alignment of the modules
Liquid collection container:	Removable and dishwasher safe
Plate:	Polished chromed plate
Upright Splash guard:	On two sides

Electric griddle with polished chromed full smooth plate. Top with deep funnel in AISI 304 stainless steel; covering in AISI 430 stainless steel thickness 8/10; bottoms and internal parts in anti-corrosion material (aluminised sheet metal). Cooking hotplate in chromed steel with high thermal conductivity for even temperature distribution. Equipped 2 independent cooking zones. Provided with front groove, extractable drawer for grease collection and splash guard on three sides. Each cooking zone is provided with 3 shielded heating elements (1 kW ea.) which are controlled by a thermostat with a range of use from 50° to 300° C - Equipped with safety thermostat and indicator light to show proper operation - Plate dimensions 595x470 mm - Total power 6 kW. Electrical power supply V AC 400+3N 50÷60 Hz.

Technical draw



E: Electric power