



Client \_\_\_\_\_

Project \_\_\_\_\_

Quantity \_\_\_\_\_

Position \_\_\_\_\_

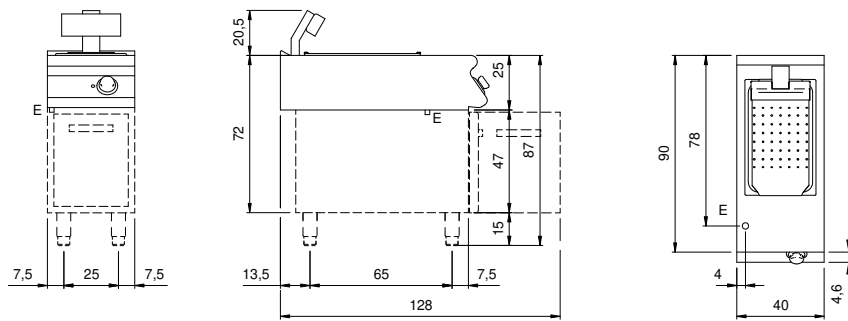
**ROC 900**

Model: R90/40SPE/P

Cod: MP01334124003

Heated chip dump, model on counter with door. Side panels, bottom and back made in stainless steel. Top made in AISI 304 thickness 20/10. designed for flush alignment. Louvered double bottom ot permit the drip of excess oil. Well suitable for GN 1/1 containers with 150 mm max. height. Infreared lamp located on the upper part for food heating. ON/OFF switch located on the board panel. Special design knobs to avoid water penetration in the control panel. Base completely made in stainless steel. Pressed hinged door. Ergonomic handle. Adjustable feet made in stainless steel. IPX5 protection rating. Electric power supply VAC 230 1N 50÷60 Hz - 1 kW.

## Technical draw



E: Electric power