

Client \_\_\_\_\_ Quantity \_\_\_\_\_  
Project \_\_\_\_\_ Position \_\_\_\_\_

## FUN 650

Model: F65/40SPE/T

Cod: MP01332122000



### Technical data

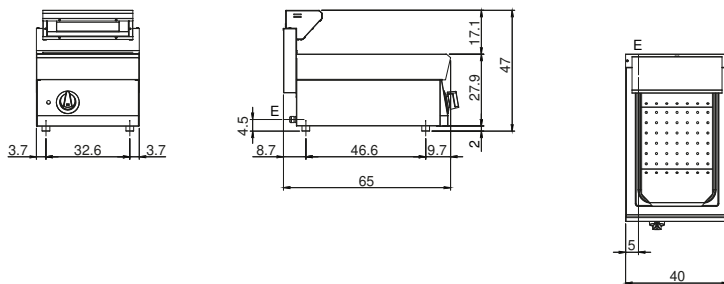
Modularity:	Top
Dimension (mm):	400x650x300
Total electric power (kW):	1
Nr. Wells:	1
Well litres 1:	25,5
Electric power (V):	220-240
Ampere (A):	5
Phases:	1
Cable section (mmq):	3G1
Frequency (Hz):	50-60
Net volume (m3):	0,078
Packing dimensions (mm):	477x776x612
Gross weight (kg):	22
Gross volume (m3):	0,227

### Features

Working top:	Made of AISI 304 stainless steel with a thickness of 10/10 mm
Knobs:	Knobs are made from a sturdy heat-resistant polymer blend and are equipped with liquid anti-leakage washer
Heating:	Infrared ceramic heating elements

Heated chip dump. The top, the bowl and the false bottom are made entirely of AISI 304 stainless steel; covering in AISI 430 stainless steel thickness 8/10; bottoms and internal parts in AISI 430 steel; internal reinforcements made of anti-corrosion material (aluminised sheet metal). Bowl GN 1/1 h. 15 cm Removable. Main switch. Ceramic infrared heating element. Indicator light to show heating element is in operation. Total power 1 kW. Electrical power supply V AC 230+1 50÷60 Hz.

## Technical draw



E: Electric power