

Client \_\_\_\_\_ Quantity \_\_\_\_\_  
 Project \_\_\_\_\_ Position \_\_\_\_\_

## FUN 600

Model: F60/30FRES/1V10/T

Cod: MP01292121001



### Technical data

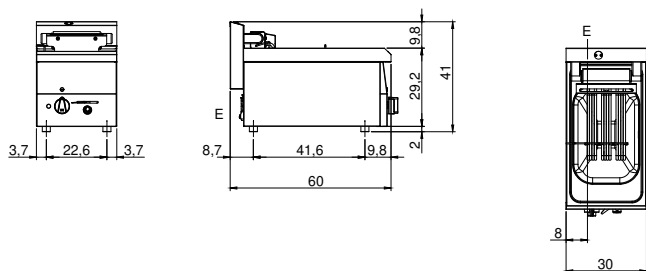
Modularity:	Top
Dimension (mm):	300x600x300
Total electric power (kW):	9
Nr. Wells:	1
Well litres 1:	10
Well dimensions 1 (mm):	244x364x169
Electric power (V):	380-415
Ampere (A):	14
Phases:	3N
Cable section (mmq):	5G2,5
Frequency (Hz):	50-60
Net volume (m3):	0,054
Packing dimensions (mm):	376x695x596
Gross weight (kg):	20
Gross volume (m3):	0,156

### Features

Working top:	Made of AISI 304 stainless steel with a thickness of 8/10 mm
Type of heating:	Direct
Knobs:	Knobs are made from a sturdy heat-resistant polymer blend
Heating:	Tilting heating elements for efficient cleaning

Electric fryer 1 vat capacity 10 lt. The top and the vat are made of entirely AISI 304 stainless steel; covering in AISI 430 stainless steel thickness 8/10; bottoms and internal parts in anti-corrosion material (aluminised sheet metal). Equipped with drain tap located on the control panel and elbow with safety insertion for removal of oil from tub. Equipped with shielded heating elements which can be tipped for cleaning and which are controlled by a thermostat with a range of use from 100°C to 190°C, main switch, safety thermostat and indicator lights to show proper operation. Tub capacity. Equipped with 1 basket GN 1/1 with thermoplastic handle and 1 vat filter. Total power 9 kW Electrical power supply V AC 400+3N 50÷60 Hz.

### Technical draw



E: Electric power