

Client _____ Quantity _____
Project _____ Position _____

FUN 700

Model: F70/80TPE/T

Cod: MP01052123000



Technical data

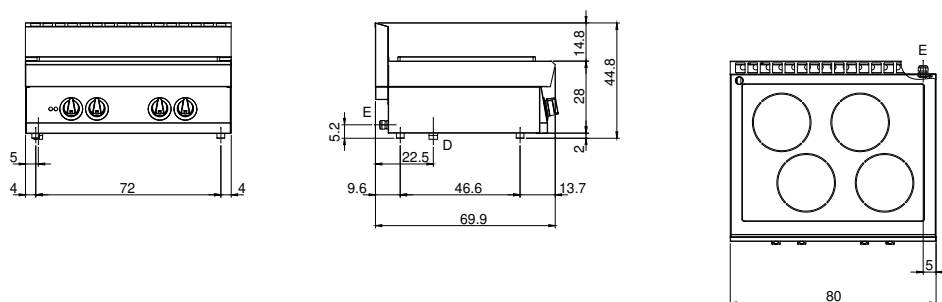
Modularity:	Top
Dimension (mm):	800x700x300
Total electric power (kW):	10
Electric power (V):	380-415
Ampere (A):	23
Phases:	3N
Cable section (mmq):	5G4
Frequency (Hz):	50-60
Drain size:	1"
Net volume (m3):	0,17
Packing dimensions (mm):	880x856x509
Gross weight (kg):	100
Gross volume (m3):	0,383

Features

Working top:	Made of AISI 304 stainless steel with a thickness of 10/10 mm
Knobs:	Knobs are made from a sturdy heat-resistant polymer blend and are equipped with liquid anti-leakage washer

Electric solid top with 4 zones top version. Top made of AISI 304 stainless steel thickness 8/10; covering in AISI 304 stainless steel thickness 8/10; bottoms and internal parts in AISI 430 steel; internal reinforcements made of anti-corrosion material (aluminised sheet metal). Cooking plate made with high thick steel 16M06. 4 independent cooking zones each with 2.5 kW power, marked with a satin cooking surface. Safety thermosat with automatic recovery. Lamp to indicate heating activation and proper working of the equipment. Total power 10 kW Electrical power supply VAC 400 + 3N 50÷60 Hz.

Technical draw



E: Electric power