

Client _____

Project _____

Quantity _____

Position _____

FUN 700

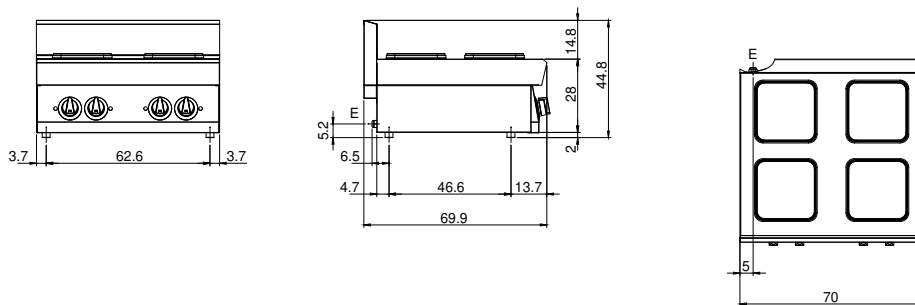
Model: F70/70PCEQ/T

Cod: MP01012123006



Electric hob 4 square plates top version. Top made of AISI 304 stainless steel thickness 8/10; covering in AISI 304 stainless steel thickness 8/10; bottoms and internal parts in AISI 430 steel; internal reinforcements made of anti-corrosion material (aluminised sheet metal). Hob equipped with cast iron electric plates with stainless steel edge sealed to top. Each plate is controlled by a switch with 6 possible temperature adjustments and is equipped with indicator lights to show that electrical power is being provided and that the plates are working. Model with square plates 220x220 mm. - 4 plates x 2.6 kW. Total power 10.4 kW Electrical power supply VAC 400 + 3N 50÷60 Hz. Can be set up on "bridge system", on open cabinet or with doors.

Technical draw



E: Electric power