

Client \_\_\_\_\_ Quantity \_\_\_\_\_  
Project \_\_\_\_\_ Position \_\_\_\_\_

## FUN 600

Model: F60/30PCE/T

Cod: MP01012121000



### Technical data

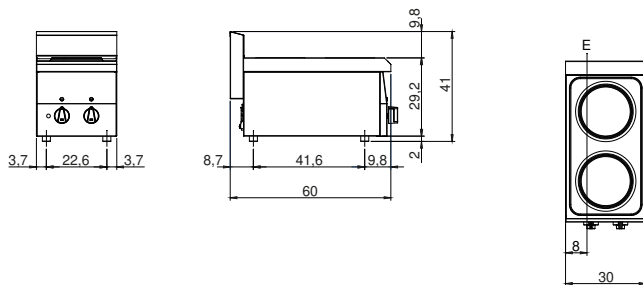
Modularity:	Top
Dimension (mm):	300x600x300
Total electric power (kW):	4
Electric power (V):	380-415
Ampere (A):	9,5
Phases:	3N
Cable section (mmq):	5G1,5
Frequency (Hz):	50-60
Net volume (m3):	0,054
Packing dimensions (mm):	376x695x596
Gross weight (kg):	16
Gross volume (m3):	0,156

### Features

Working top:	Made of AISI 304 stainless steel with a thickness of 8/10 mm
Knobs:	Knobs are made from a sturdy heat-resistant polymer blend
Flue:	Made in a single piece, which facilitates the alignment of the modules

Electric hob with 2 plates Top with deep funnel in AISI 304 stainless steel; covering in AISI 430 stainless steel thickness 8/10; bottoms and internal parts in anti-corrosion material (aluminised sheet metal). Hob with cast iron electric plates Ø 180 mm with stainless steel edge sealed to top. Six different temperature adjustments for each plate. Indicator lights to show electrical power supplied and plates in operation. Power: 2 plates x 2 kW ea. Total power 4 kW. Electrical power supply VAC 400+3N 50÷60 Hz.

## Technical draw



E: Electric power