

Client _____ Quantity _____
 Project _____ Position _____

FUN 650

Model: F65/70PCGB/T

Cod: MP01012112002



Technical data

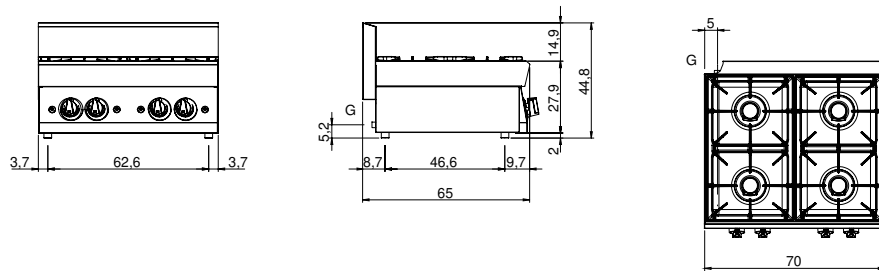
Modularity:	Top
Dimension (mm):	700x650x300
Total gas power (Kcal/h):	14790
Total gas power (kW):	17,2
Gas connection:	1/2"
Net volume (m3):	0,137
Packing dimensions (mm):	776x776x636
Gross weight (kg):	43
Burner power 1 (kW):	5
Burner power 2 (kW):	3,6
Burner power 3 (kW):	5
Burner power 4 (kW):	3,6
Gross volume (m3):	0,383

Features

Burners:	Piezo ignition available in cast iron with single crown brass burner cap
Grill:	In cast iron with long spokes
Working top:	Made of AISI 304 stainless steel with a thickness of 10/10 mm and removable enamelled containers
Knobs:	Knobs are made from a sturdy heat-resistant polymer blend and are equipped with liquid anti-leakage washer
Kit Gas:	Natural gas conversion kit 30/50 m/bar (tested with natural gas G20)

Gas boiling unit with 4 burners Top made of AISI 304 stainless steel thickness 8/10; covering in AISI 430 stainless steel thickness 8/10; bottoms and internal parts in AISI 430 steel; internal reinforcements made of anti-corrosion material (aluminised sheet metal). Hob equipped with high-power rapid burners in cast iron/brass (2x3.6 kW + 2x5 kW). Bowls in enamelled steel that can be extracted for easy cleaning. Pan supports for hobs in acid-resistant enamelled cast iron. Gas safety valve cocks with thermocouple, piezoelectric burner ignition. Total power 17.2 kW

Technical draw



G: Gas connection 1/2"