



Client _____ Quantity _____
Project _____ Position _____

ROC 1100

Model: R110/60FTE/SR/P

Cod: MP01375125020

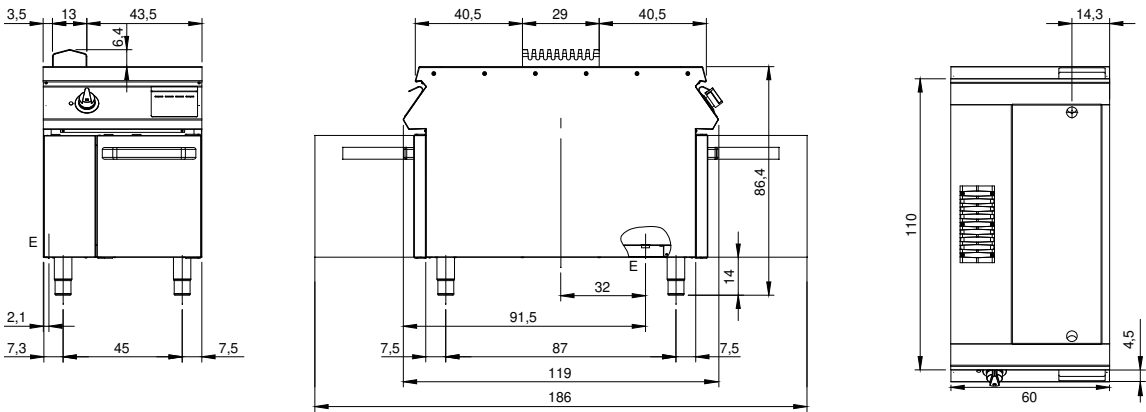
Technical data

Modularity:	On cabinet with doors
Dimension (mm):	600x1100x870
Total electric power (kW):	7,5
Cooking zone dimensions 1 (LxD mm):	734x900
Electric power (V):	380-415
Ampere (A):	11,5
Phases:	3N
Cable section (mmq):	5G1,5
Frequency (Hz):	50-60
Net volume (m3):	0,574
Packing dimensions (mm):	880x1272x1274
Gross weight (kg):	130
Gross volume (m3):	1,426

Features

Working top:	Rrealizzato in acciaio inox AISI 304 spessore 2 mm
Material of plate:	Cromo satinato
Plate finish:	Ribbed
Knobs:	Made of aluminum with IPX5 water protection
Handles:	The brushed aluminum handles allow for a secure and sturdy grip with a ergonomic lines
Flue:	Made of AISI 304 stainless steel
Heating:	Armoured heating elements
Liquid collection container:	Removable and dishwasher safe
Plate:	Satin chrome plate
Upright Splash guard:	On two sides (optional)

Technical draw



E: Electric power